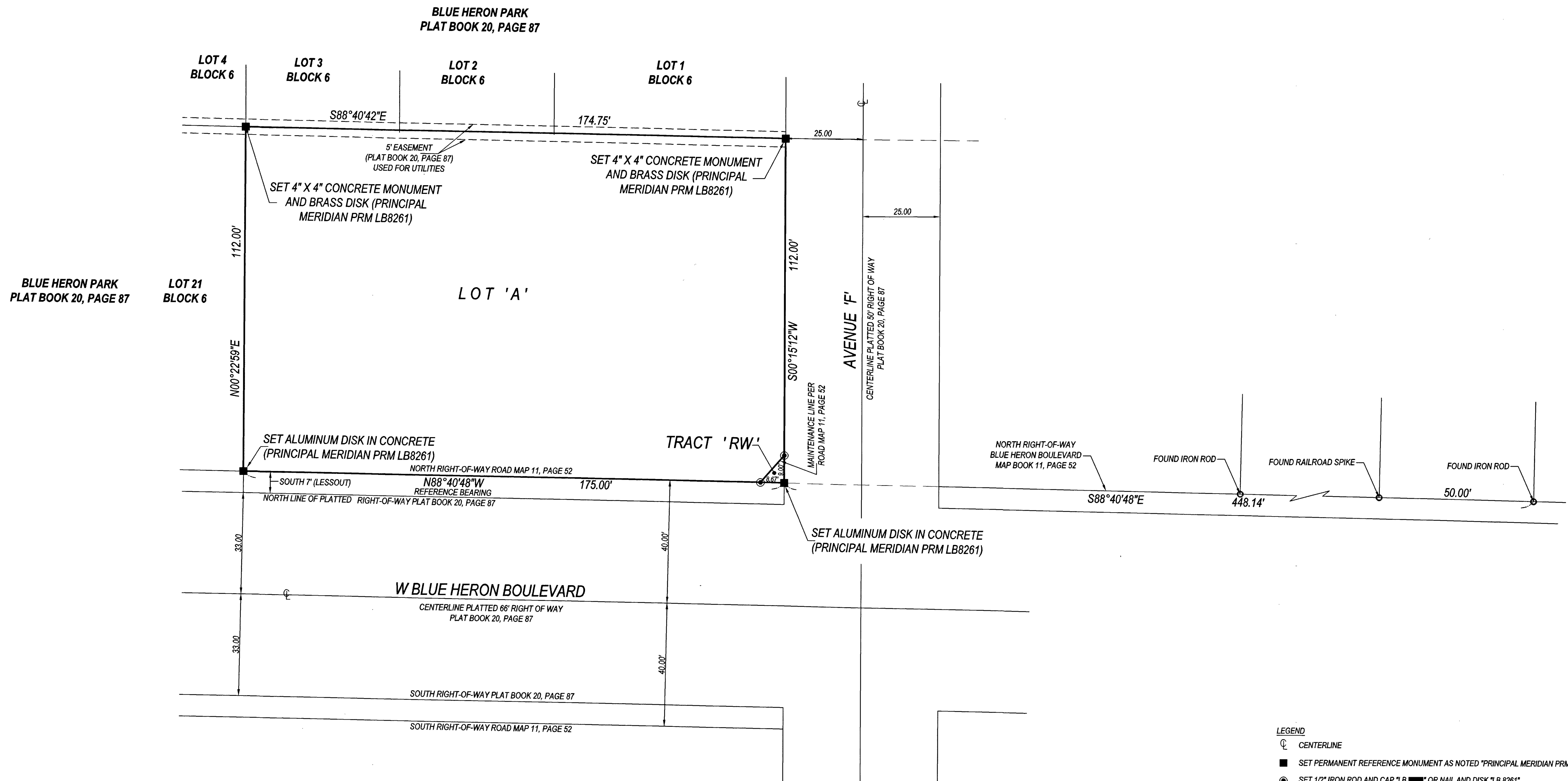
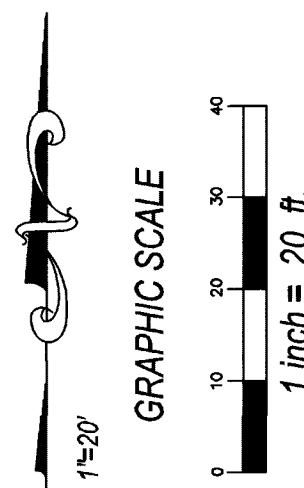


BLUE LAGOON PLAZA

BEING A REPLAT OF LOTS 22, 23 AND 24, BLOCK 6, BLUE HERON PARK, AN ADDITION TO THE CITY OF RIVIERA BEACH, FLORIDA, ACCORDING TO THE PLAT THEREOF, AS RECORDED IN PLAT BOOK 20, PAGE 87, OF THE PUBLIC RECORDS OF PALM BEACH COUNTY, FLORIDA; LESS THE SOUTH SEVEN FEET(7') THEREOF.

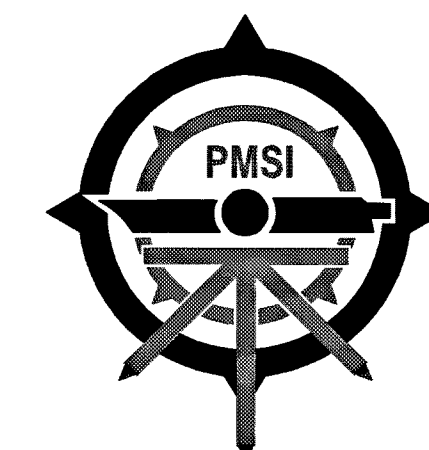
LYING AND BEING IN SECTION 28, TOWNSHIP 42 SOUTH, RANGE 43 EAST, PALM BEACH COUNTY, THE CITY OF RIVIERA BEACH, FLORIDA
SHEET 2 OF 2

130



- LEGEND**
- ⊙ CENTERLINE
 - SET PERMANENT REFERENCE MONUMENT AS NOTED "PRINCIPAL MERIDIAN PRM LB8261"
 - SET 1/2" IRON ROD AND CAP "LB" OR NAIL AND DISK "LB 8261"
 - FOUND 4" X 4" CONCRETE MONUMENT (PERMANENT REFERENCE MONUMENT)
 - FOUND NAIL AND DISK, IRON ROD AND CAP

STATE PLANE COORDINATE NOTES:
LINEAR FOOT IS US SURVEY FOOT. COORDINATE SYSTEM IS 1983 STATE PLANE TRANSVERSE MERCATOR PROJECTION. ALL DISTANCES ARE GRID (UNLESS OTHERWISE NOTED).
SCALE FACTOR IS 1.000049304 (GRID DISTANCE DIVIDED BY SCALE FACTOR IS GROUND DISTANCE).
BEARINGS SHOWN ARE GRID DATUM, NAD 83, 1990 ADJUSTMENT, FLORIDA EAST ZONE.



**PRINCIPAL
MERIDIAN
SURVEYING INC.**
4546 CAMBRIDGE STREET
WEST PALM BEACH, FL 33415
PHONE 833.478.7764 / FAX 561.478.1094
WWW.PMSURVEYING.NET
JOB # 20030201